

Micro-Switch/16 & 24

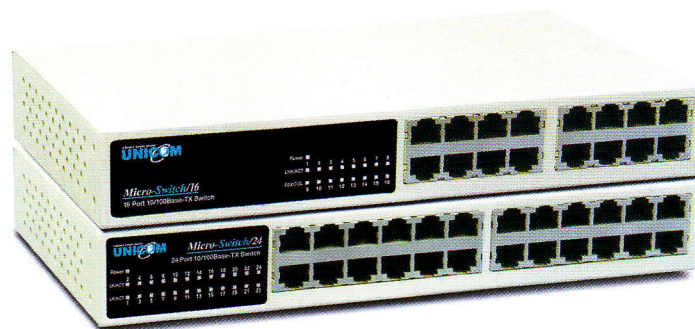
16 and 24 Port 10/100 Base-TX Fast Ethernet Switches



Features

- Conforms to IEEE 802.3, 802.3u, and 802.3x standards
- N-way 10/100TX Ethernet RJ-45 ports
- Automatic MDI/MDIX Crossover* all Ports
- Back pressure for Half-duplex, Flow control for Full-duplex
- Store-and-forward switching architecture
- Non-blocking and Full wire speed forwarding rate
- Embedded 1.25Mbits memory buffer
- 4K-entry MAC address table
- 4.8 Gbps Back plane Bandwidth
- LED-indicators for Power; LNK/ACT, FD/COL
- Compact 10" size

Perfect for Small/Medium Offices



Micro-Switch/16 and 24
FEP-32016T and FEP-32024T

PART NUMBER	DESCRIPTION
FEP-32016T	16 Port 10/100Base-TX Desktop Fast Ethernet Switch
FEP-32024T	24 Port 10/100Base-TX Desktop Fast Ethernet Switch



Unicom's Micro-Switch/16 and 24 are compact store-and-forward devices that offer low latency for high-speed networking. They are targeted at workgroup, department, or backbone computing environments in SME (small, medium enterprise) businesses.

Both the Micro-Switch/16 and 24 have dedicated 10/100Mbps bandwidth. The full-duplex operation mode effectively doubles the bandwidth for each port. It can increase the bandwidth of the 10M Ethernet port and the 100Mbps Fast Ethernet port to 20Mbps and 200Mbps, respectively.

To enhance performance, these switches support IEEE 802.3 full-duplex flow control and half-duplex back pressure congestion control. In addition, they execute the method of store-and-forward by auto-learning and stores source addresses on a 2K-entry MAC address table.

Automatic MDI/MDIX Crossover

* Most hubs and switches are designed with one uplink port to cascade other hubs or switches. The Micro-Switch/8 supports new MDI/MDIX technology - each port can be either a normal port or an uplink port offering an automatic crossover function to either 10Base-T or 100Base-TX allowing you to use either a pin-to-pin or crossover cable with no problems.

Distributed by:

SPECIFICATIONS

Standard Compliance:	IEEE 802.3 10Base-T Ethernet, IEEE 802.3u 100Base-TX Fast Ethernet IEEE802.3x Flow Control and Back-pressure IEEE ANSI/IEEE802.3 N-Way Auto-negotiation
Interface:	Sixteen or twenty-four RJ-45 Jacks with Auto MDI/MDIX crossover
Switching Method:	Store-and-Forward
Forwarding Rate:	14,880pps for 10Mbps; 148,800pps for 100Mbps
Buffer Memory:	1.25Mbits
MAC Address Table:	4K Mac address table
Back-plane:	4.8Gbps
Cable Distance:	10Base-T: 2-pair UTP/STP Cat. 3/5e/6 cable, EIA/TIA-568 100-ohm (up to 100m) 100Base-TX: 2-pair UTP/STP Cat. 5e/6 cable, EIA/TIA-568 100-ohm (up to 100m)
LED Indicators:	Per Port: Link/Activity; Per Unit: Power
Dimensions:	250mm x 133 mm x 37mm (L x W x H) 9.85" x 4.45" x 1.46"
Operating Temperature:	0°C to 45°C (32°F to 113°F)
Operating Humidity:	10% to 90% (Non-condensing)
Power Supply:	Internal power supply, 100-240 VAC, 50~60Hz
EMI:	FCC Class A, CE
Safety:	CE/EN60950, UL, cUL



908 Canada Court
City of Industry, CA 91748 U.S.A.
Phone: 626.964.7873 or 800.346.6668 Fax: 626.964.7880
www.unicomlink.com e-mail: info@unicomlink.com